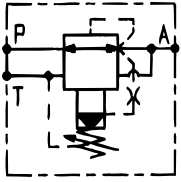


HRP

ISO
5781
4401

REDUCTEURS DE PRESSION PRESSURE REDUCING VALVES DRUCKREGELVENTILE

Taille 3
Size 3
NG 6



| | |
|---------------------------|--|
| Modèle Model Modell | Avec limiteur de pression A → T Incorporating a pressure relief valve A → T Mit Druckbegrenzungsventil A → T |
|---------------------------|--|

| | | | |
|-------------------------------|---|----------------|---|
| Montage Mounting Einbau | Plage de pression Pressure range Druckbereich | P max Q max | Référence Part number Bestellnummer |
|-------------------------------|---|----------------|---|

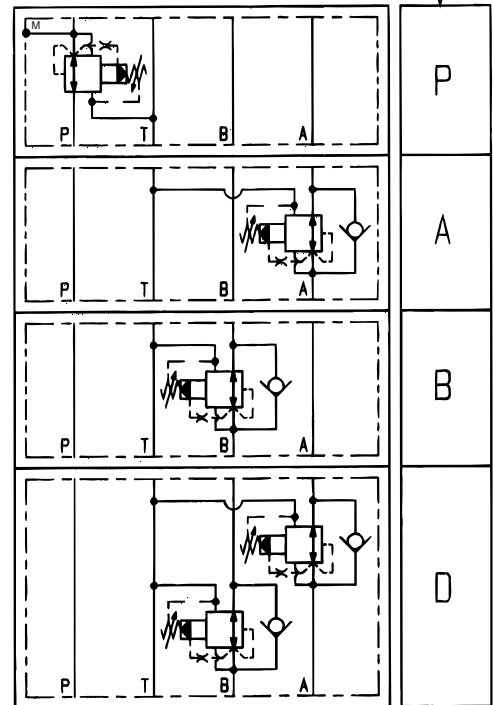
| | | | | | | | | |
|--|--------------|--------------------|-----|-----|----|---|---|---|
| Sur embase On subplate Auf Grundplatte | 7 - 27 bar | 210 bar 40 l/mn | HRP | 3EE | 02 | a | b | c |
| | 10 - 103 bar | | | 3EE | 10 | a | b | c |
| | 27 - 207 bar | | | 3EE | 20 | a | b | c |
| | 20 - 315 bar | 315 bar | HRP | 3EE | 31 | a | b | c |

| | | | | | | | | |
|--|--------------|--------------------|-----|-----|----|---|---|---|
| Système transfert Transfer system Transfersystem | 7 - 27 bar | 210 bar 40 l/mn | HRP | 3ET | 02 | a | * | c |
| | 10 - 103 bar | | | 3ET | 10 | a | * | c |
| | 27 - 207 bar | | | 3ET | 20 | a | * | c |
| | 20 - 315 bar | 315 bar | HRP | 3ET | 31 | a | * | c |

| | |
|----------|---|
| a | Matière joint Seal materials Dichtungswerkstoffe |
| H | Nitrile (standard) |
| V | Viton |
| b | Clapet anti-retour Check valve Rückschlagventile |
| S | Sans Without Ohne |
| R | Avec With Mit |

| | |
|----------|---|
| c | Réglage Adjustment Einstellung |
| Z | Vis Screw Schraube |
| W | Bouton Hand knob Drehknopf |
| T | Vis avec plombage Tamperproof screw Verplombte Schraube |

■ sur demande
on request
auf Anfrage

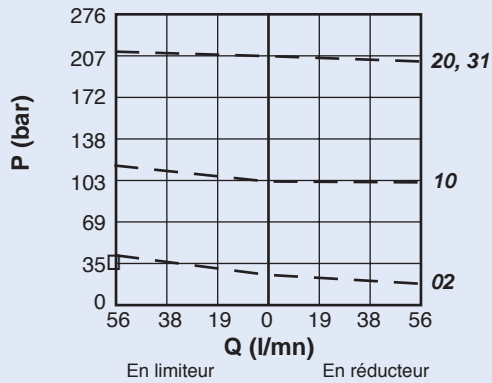


| | | | |
|----------------------------|----------------------|--|--|
| HRP 3EE... | | HRP 3ET... | |
| | | | |
| Poids Weight Gewicht | S 1.0 kg R 1.3 kg | 1.0 kg + ca 1.3 kg 1.3 kg + ca 1.3 kg | |

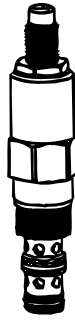
| | | | | |
|---|-------------|-------------|-------------|-------------|
| | 02 | 10 | 20 | 31 |
| Fuite de pilotage maximum Maximum pilot leakage Maximaler Steuerölverbrauch | 0.2 l/mn | 0.2 l/mn | 0.2 l/mn | 0.2 l/mn |

Caractéristiques Performance Kennlinien

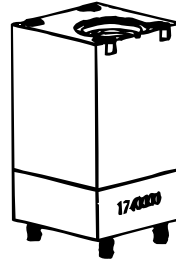
Courbes débit-pression
Viscosité 32 cst



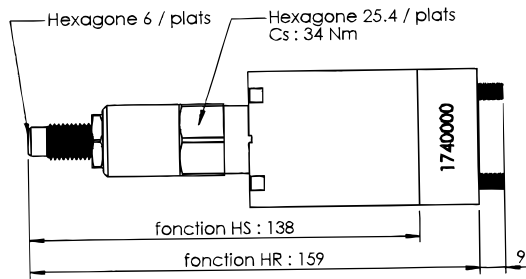
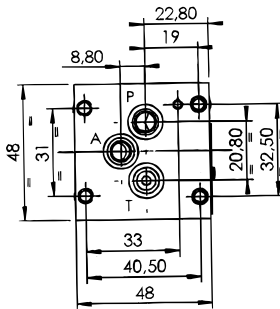
Pièces de rechange Spare parts Ersatzteile



| | | |
|--|----------------|--------------------------|
| Pochette de joints : Seal kit : Dichtungssatz : | | Code |
| - joints plan de pose (20 joints) - interface seal kit (20 seals) - Lochbild (20 Dichtungsringe) | | 1591200 |
| - 1 cartouche - 1 cartridge - 1 Patronen | 02-10-20 31 | SK10-3N-BM SK10-3P-BM |
| Cartouches | 02 | PR10-36A-0-N-04 |
| Cartridges | 10 | PR10-36A-0-N-15 |
| Patronen | 20 | PR10-36A-0-N-30 |
| | 31 | PR50-36A-0-P-50 |



Encombrement Overall dimensions Abmessung



HRP 3EExxHxZ

4 x CHc M5
Cs : 6. à 9 Nm

HRP 3ETxxHxZ

