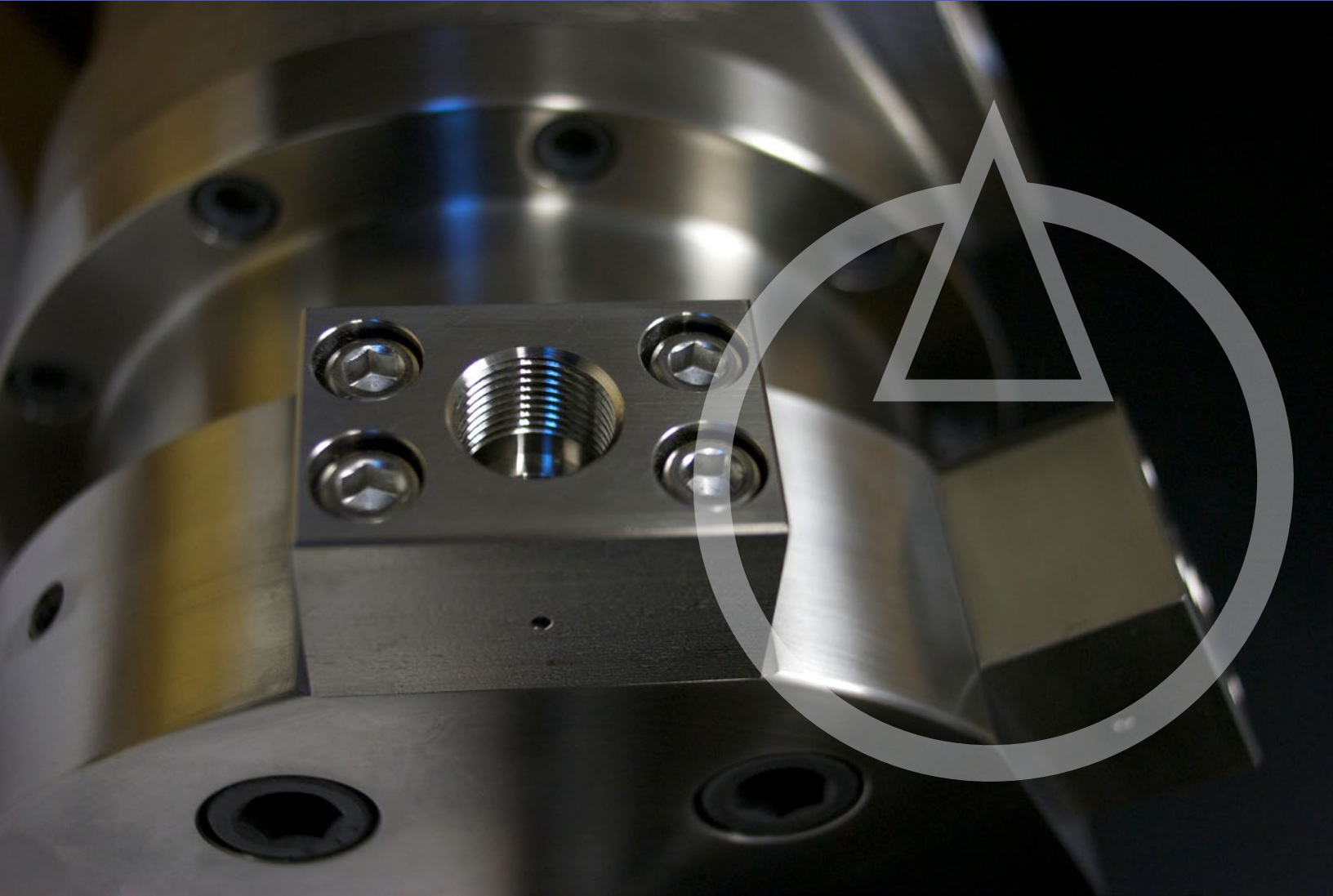


Dynex Product Overview



DYNEX PF500 SERIES FIXED DISPLACEMENT CHECKBALL PUMPS

0.21 to 0.69 gpm (0,79 to 2,59 L/min) at 1800 rpm

Rated: 10 000 psi (700 bar), Maximum: 15 000 psi (1040 bar)



- Power requirements as low as 1.0 HP at 10 000 psi (0,75 kW at 700 bar).
- Bi-directional rotation providing constant flow direction regardless of drive shaft rotation.
- Split-Flow® models can supply independent flows from up to four separate outlets.
- Used on wellhead control panel system – Solar-powered systems – Power packs on high-torque service tools.

DYNEX PF1000 SERIES FIXED DISPLACEMENT CHECKBALL PUMPS

1.5 to 5.9 gpm (5,7 to 22,3 L/min) at 1800 rpm

Rated: 6 000 psi (420 bar), Maximum: 10 000 psi (700 bar)



- Contamination tolerant, for operation in dirty environments.
- Bi-directional rotation providing constant flow direction regardless of drive shaft rotation.
- Split-Flow® models can supply independent flows from up to four separate outlets.
- Used on wellhead control panel systems – lifting, skidding, and jacking applications.

DYNEX PF1300 SERIES FIXED DISPLACEMENT CHECKBALL PUMPS FOR WATER-BASED FLUIDS

0.31 to 1.42 gpm (1,18 to 5,37 L/min) at 1800 rpm

Maximum: 10 000 psi (700 bar)



- A wide range of fluid compatibility, for reliable operation with low-lubricity, low viscosity fluids.
- Bi-directional rotation providing constant flow direction regardless of drive shaft rotation.
- Single-fluid design eliminates the need for a lubrication circuit.
- These water-glycol pumps are used on wellhead control systems – Subsea applications – Other systems requiring waterbased or fire-resistant fluids.

DYNEX PF2000 FIXED DISPLACEMENT CHECKBALL PUMPS

4.1 to 8.5 gpm (15,5 to 32,2 L/min) at 1800 rpm

Rated: 3 000 psi (210 bar), Maximum: 10 000 psi (700 bar)



- Contamination tolerant, for operation in dirty environments.
- Bi-directional rotation providing constant flow direction regardless of drive shaft rotation.
- Split-Flow® models can supply independent flows from up to six separate outlets.
- Used on lifting, skidding, and jacking applications – High-pressure hydraulic press applications – Mining equipment including rock crushers – Multiple-function systems with changing flow and pressure requirements.

DYNEX PF3000 SERIES FIXED DISPLACEMENT CHECKBALL PUMPS

8.1 to 17.2 gpm (30,7 to 65,1 L/min) at 1800 rpm

Rated: 4000 psi (700 bar), Maximum: 10000 psi (1040 bar)



- Contamination tolerant, for operation in dirty environments.
- Bi-directional rotation providing constant flow direction regardless of drive shaft rotation.
- Split-Flow® models can supply independent flows from up to eight separate outlets.
- Used on lifting, skidding, and jacking applications – Oil field B.O.P systems – Test stands – Lubrication systems – Other demanding industrial, mobile, and marine applications.

DYNEX PF4000 SERIES FIXED DISPLACEMENT CHECKBALL PUMPS

7.7 to 14.0 gpm (29,1 to 53,0 L/min) at 1800 rpm

Rated: 6000 psi (420 bar), Maximum: 10000 psi (700 bar)



- Contamination tolerant, for operation in dirty environments.
- A wide range of fluid compatibility, for reliable operation with low-lubricity, low viscosity fluids.
- Bi-directional rotation providing constant flow direction regardless of drive shaft rotation.
- Split-Flow® models can supply independent flows from up to ten separate outlets.
- Used on Tunneling machines, high-force pipe jacking – Lifting, skidding, and jacking applications – Test stands – Other demanding industrial, mobile, and marine applications.

DYNEX PF4200 SERIES FIXED DISPLACEMENT CHECKBALL PUMPS

2.2 to 6.7 gpm (8,3 to 25,4 L/min) at 1800 rpm

Rated: 8000 psi (560 bar), Maximum: 20000 psi (1380 bar)



- A wide range of fluid compatibility, for reliable operation with low-lubricity, low viscosity fluids.
- Bi-directional rotation providing constant flow direction regardless of drive shaft rotation.
- Used on Hydrostatic roll balance and high-pressure lubrication systems – Test stands – Skydrol and other phosphate ester fluid applications – Other demanding industrial, mobile, and marine applications.

DYNEX PF4300 SERIES FIXED DISPLACEMENT CHECKBALL PUMPS FOR WATER-BASED FLUIDS

2.2 to 8.2 gpm (8,3 to 31,0 L/min) at 1800 rpm

Maximum: 15000 psi (1040 bar)



- Corrosion resistant stainless steel design.
- A wide range of fluid compatibility, for reliable operation with low-lubricity, low viscosity fluids.
- Bi-directional rotation providing constant flow direction regardless of drive shaft rotation.
- Single-fluid design eliminates the need for a lubrication circuit.
- These water-glycol pumps are used on wellhead control systems – Subsea applications – Test stands – Aerospace ground support equipment – Other systems requiring waterbased or fire-resistant fluids.



DYNEX PF6000 SERIES FIXED DISPLACEMENT CHECKBALL PUMPS

12.7 to 54 gpm (48 to 204,4 L/min) at 1800 rpm
Rated: 5 500 psi (380 bar) – 15 000 psi (1040 bar)
Max: 5 500 psi (1380 bar) – 15 000 psi (1040 bar)

- Contamination tolerant, for operation in dirty environments.
- Bi-directional rotation providing constant flow direction regardless of drive shaft rotation.
- Split-Flow® models can supply independent flows from up to ten separate outlets.
- Used on mining equipment, rotary drill rigs – High-pressure hydraulic press applications – Other demanding industrial, mobile, and marine applications.



DYNEX PV4000 SERIES VARIABLE DISPLACEMENT CHECKBALL PUMPS

12.2 to 14.0 gpm (45,2 to 53,0 L/min) at 1800 rpm
Rated: 4 000 psi (280 bar), Maximum: 6 000 psi (420 bar)

- Contamination tolerant, for operation in dirty environments.
- A wide range of fluid compatibility, for reliable operation with low-lubricity, low viscosity fluids.
- Split-Flow® models can supply independent flows from up to ten separate outlets.
- Used on mining equipment, rotary drill rigs – Test stands – Skydrol and other phosphate ester fluid applications – Other demanding industrial, mobile, and marine applications.



DYNEX PV4000 SERIES PRESSURE COMPENSATED CHECKBALL PUMPS

12.0 to 22.4 gpm (45,4 to 84,8 L/min) at 1800 rpm
Rated: 4 000 psi (280 bar), Maximum: 8 500 psi (590 bar)

- Integral pressure compensation for energy efficient performance.
- Contamination tolerant, for operation in dirty environments.
- A wide range of fluid compatibility, for reliable operation with low-lubricity, low viscosity fluids.
- Used on Mining equipment, rotary drill rigs – Tunneling machines and high-force pipe jacking – Test stands – Skydrol and other phosphate ester fluid applications – Other demanding industrial, mobile, and marine applications.



DYNEX PV6000 SERIES PRESSURE COMPENSATED CHECKBALL PUMPS

31.1 to 61,4 gpm (117,7 to 232,4 L/min) at 1800 rpm
Rated: 6 000 psi (420 bar), Maximum: 8 500 psi (590 bar)

- High-flow, high-pressure.
- Integral pressure compensation for energy efficient performance.
- Contamination tolerant, for operation in dirty environments.
- A wide range of fluid compatibility, for reliable operation with low-lubricity, low viscosity fluids.
- Used on mining equipment, rotary drill rigs – Test stands – Skydrol and other phosphate ester fluid applications – Other demanding industrial, mobile, and marine applications.



DYNEX PV6000 SERIES VARIABLE DISPLACEMENT CHECKBALL PUMPS

35.4 to 54.0 gpm (134,0 to 204,4 L/min) at 1800 rpm
Rated: 5 500 psi (380 bar), Maximum: 6 000 psi (420 bar)

- Hydraulically controlled variable delivery.
- Contamination tolerant, for operation in dirty environments.
- Bi-directional rotation providing constant flow direction regardless of drive shaft rotation.
- A wide range of fluid compatibility, for reliable operation with low-lubricity, low viscosity fluids.
- Split-Flow® models can supply two independent flows (from five pistons each). These pumps can supply two variable flows, or one fixed and one variable flow.
- Used on mining equipment, rotary drill rigs – Test stands – Skydrol and other phosphate ester fluid applications – Other demanding industrial, mobile, and marine applications.



DYNEX PV2000 SERIES VALVEPLATE PUMPS

Pressures to 4000 psi (280 bar), Flows to 24.5 gpm (92,7 L/min)
at 1800 rpm.

- Control options include:
 - Electro-hydraulic Proportional Volume Control
 - Pressure Compensated
 - Remote Pressure Compensated
 - Load Sensing
- Used on paving equipment – Rotary drill rigs – Oil field flushing systems.



DYNEX MF2000 SERIES VALVEPLATE MOTORS

Pressures to 4000 psi (280 bar). Torque to 1386 lb·in at 3000 psi
(157 N·m at 210 bar).

- These medium-duty valveplate motors deliver high-torque for their compact size.
- Ideal for hydrostatic drive systems – Paving equipment.



DYNEX MF5000 SERIES VALVEPLATE MOTORS

Pressures to 8000 psi (560 bar). Torque to 4775 lb·in at 5000 psi
(540 N·m at 350 bar).

- Rugged, heavy-duty design.
- Ideal for applications subject to pressure spikes, vibration, constant starting/stopping, and sudden direction reversals.
- Used on mining equipment, rotary drill rigs.

DYNEX D03 PATTERN DIRECTIONAL CONTROL VALVES

Nominal Flow: 8 gpm (30 L/min), Max Flow: 15 gpm (57 L/min)

Rated Pressure: 5 000 psi (350 bar)



- Actuator Options include: Manual Lever; Direct Solenoid; Hydraulic Piloted; Air Piloted.
- Exceptionally low pressure drop.
- Full range of Spool types, Actuators, Electrical connections and Solenoid options.
- Used on machine tools – Presses – Test stands – Torque tools – Other demanding industrial, mobile, and marine applications.

DYNEX HP03 (Special High Pressure Pattern) DIRECTIONAL CONTROL VALVES

Nominal Flow: 5 gpm (19 L/min), Max Flow: 15 gpm (57 L/min)

Rated Pressure: 10 000 psi (700 bar)



- Actuator Options include: Manual Lever; Direct Solenoid; Hydraulic Piloted; Air Piloted.
- Special mounting pattern required.
- Full range of Spool types, Actuators, Electrical connections and Solenoid options.
- Used on high-pressure presses – Test stands – Torque tools – Other demanding industrial, mobile, and marine applications.

DYNEX D05 - N.F.P.A. D05/ISO 05 PATTERN DIRECTIONAL CONTROL VALVES

Nominal Flow: 20 gpm (76 L/min), Max Flow: 40 gpm (152 L/min)

Rated Pressure: 5 000 psi (350 bar)



- Actuator Options include: Manual Lever; Direct Solenoid; Hydraulic Piloted; Air Piloted.
- Exceptionally low pressure drop.
- Full range of Spool types, Actuators, Electrical connections and Solenoid options.
- Used on machine tools – Presses – Test stands – Torque tools – Other demanding industrial, mobile, and marine applications.

DYNEX HP05 - N.F.P.A. (Special High Pressure Pattern) DIRECTIONAL CONTROL VALVES

Nominal Flow: 5 gpm (19 L/min), Max Flow: 25 gpm (95 L/min)

Rated Pressure: 8 000 psi (560 bar)



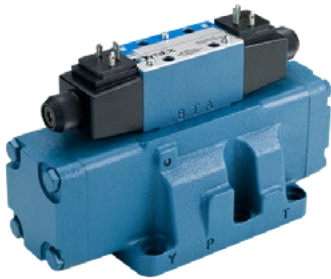
- Actuator Options include: Direct Solenoid; Hydraulic Piloted; Air Piloted.
- Special mounting pattern required.
- Full range of Spool types, Actuators, Electrical connections and Solenoid options.
- Used on machine tools – Presses – Test stands – Torque tools – Other demanding industrial, mobile, and marine applications.



DYNEX D05H - N.F.P.A. D05/ISO 05 PATTERN (With "X" and "Y" ports for external pilot and drain) DIRECTIONAL CONTROL VALVES

Nominal Flow: 30 gpm (114 L/min), Max Flow: 40 gpm (151 L/min)
 Rated Pressure: 5 000 psi (350 bar)

- Actuator Options include: Solenoid Piloted; Hydraulic Piloted; Air Piloted.
- Special mounting pattern required.
- Full range of Spool types, Actuators, Electrical connections and Solenoid options.
- Used on machine tools, presses – Test stands – Torque tools and other demanding industrial, mobile, and marine applications.



DYNEX D08 - N.F.P.A. D08/ISO 08 PATTERN DIRECTIONAL CONTROL VALVES

Nominal Flow: 40 gpm (151 L/min), Max Flow: 90 gpm (341 L/min)
 Rated Pressure: 5 000 psi (700 bar)

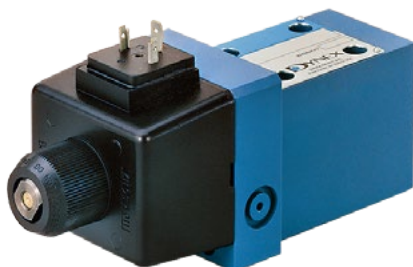
- Actuator Options include: Manual Lever; Solenoid Piloted; Hydraulic Piloted; Air Piloted.
- Full range of Spool types, Actuators, Electrical connections and Solenoid options.
- Used on machine tools, presses – Test stands – Torque tools and other demanding industrial, mobile, and marine applications.



DYNEX D08H - N.F.P.A. D08/ISO 08 PATTERN DIRECTIONAL CONTROL VALVES

Nominal Flow: 20 gpm (76 L/min), Max Flow: 40 gpm (152 L/min)
 Rated Pressure: 5 000 psi (350 bar)

- Actuator Options include: Manual Lever; Direct Solenoid; Hydraulic Piloted; Air Piloted.
- Exceptionally low pressure drop.
- Wide range of Spool types, Electrical connections and Solenoid options.
- Used on machine tools, presses – Test stands – Torque tools and other demanding industrial, mobile, and marine applications.



DYNEX VST SEATED VALVES - (Special HP03 Pattern) DIRECTIONAL CONTROL VALVES

Two position, two-way valves – rated for: 5 gpm at 10 000 psi (19 L/min at 700 bar), for low-flow venting functions.
 Two position, three-way valves – rated for: 5 gpm at 10 000 psi (19 L/min at 700 bar), for load holding functions.
 Vent valves – rated for: 1 gpm at 15 000 psi (3,8 L/min at 1040 bar) .

- Non-silting ball-on-seat design.
- Used on high-pressure test stands and other demanding industrial, mobile, and marine applications.



DYNEX VH HIGH-PRESSURE CONTROL VALVES

Flows to 30 gpm at pressures to 15 000 psi (114 L/min at 1040 bar).

- Available as a Relief, Unloading, or Decompression Valve.
- Suitable for use with some water-based, fire-resistant, and other special fluids including water glycol, various military fluids, Skydrol and other phosphate ester fluids.
- Line connected or subplate mounted.
- Optional integral vent valve for remote pressure control.
- Used on high-pressure test stands – Presses – Other demanding industrial, mobile, and marine applications.



DYNEX H8819 HIGH-PRESSURE/HIGH-FLOW RELIEF VALVES

Rated to 50 gpm at 15 000 psi (190 L/min at 1040 bar), or

Rated to 75 gpm at 9000 psi (284 L/min at 620 bar).

- Available in Manual, Electric Vent, or Electro-Hydraulic Proportional Control.
- Compatible with conventional fluids or with low viscosity and other special fluids, including military fluids, Skydrol and other phosphate ester fluids.
- Used on high-pressure test stands – Aerospace ground support equipment – Other applications requiring special fluids.



DYNEX 8820 SERIES PANEL MOUNTED PRESSURE CONTROL VALVES

Rated Pressure: 5 000 psi (350 bar)

Remote Pressure Control:

Nominal Flow 0.75 gpm (2,8 L/min), Max Flow 1.0 gpm (3,8 L/min)

Direct Acting Relief:

Nominal Flow 1.5 gpm (5,7 L/min), Max Flow 2.5 gpm (9,5 L/min)

- Handwheel or Cam Operator Option.
- Used on hydraulic power units and other demanding industrial, mobile, and marine applications.



DYNEX 8800 SPOOL PRESSURE CONTROL VALVES

Max Pressure: 5 000 psi (350 bar)

Size: 03: Max Flow 20 gpm (76 L/min)

06: Max Flow 60 gpm (227 L/min)

10: Max Flow 150 gpm (568 L/min)

- Available as Relief, Reducing, Unloading, Counterbalance and Sequence functions .
- Optional integral vent valve (Size 10 only).
- Used on oil field equipment and other demanding industrial, mobile, and marine applications.



DYNEX 8800 POPPET STYLE PRESSURE CONTROL VALVES

Max Pressure: 5 000 psi (350 bar)

Size: 03: Max Flow 25 gpm (95 L/min)

06: Max Flow 60 gpm (227 L/min)

- Available as Relief, Unloading functions.
- Line Connected or Subplate Mounted.
- Electric Vent Option.
- Used on machine tools and other demanding industrial, mobile, and marine applications.



DYNEX COMBO VALVES

Max Pressure: 10 000 psi (700 bar)

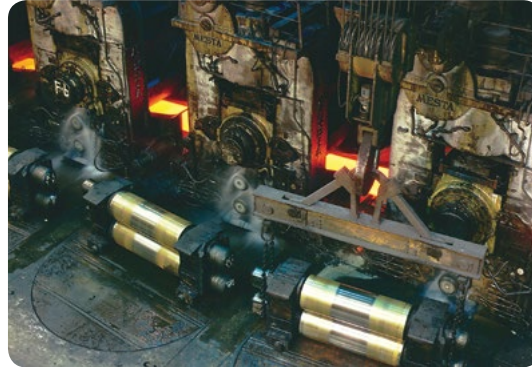
Max Flow 4.5 gpm (17 L/min)

- Provides Directional / Pressure / Decompression Control
- Used on torque tools and other high-low circuit applications.

Components for Long Life in Tough Applications



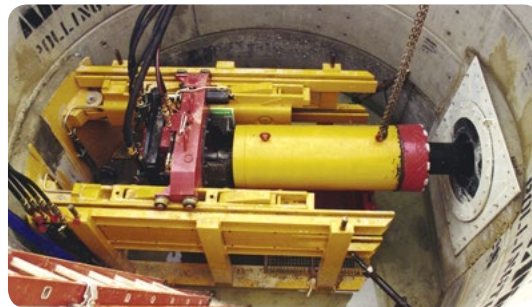
High-pressure torque tools with checkball pumps provide long life, higher speed and increased power.



In steel mills, pumps withstand severe heat and dirty conditions supplying bearing lubrication systems.



Water glycol pumps operate reliably with low maintenance on wellhead control systems.



Pumps operate at pressures to 10 000 psi (700 bar) in harsh, dirty conditions on pipe jacking systems.



High-pressure pumps perform exceptionally with a wide range of fluids in harsh test stand applications.



One Split-Flow[®] pump can supply multiple jacks for accurate synchronized lifting without flow dividers.

www.dynexhydraulics.com

USA Headquarters

770 Capitol Drive
Pewaukee, WI 53072
Tel: 262-691-0300
FAX: 262-691-0312
E-mail: sales@dynexhydraulics.com

Power Units & Systems

54 Nickerson Road
Ashland, MA 01721
Tel: 508-881-5110
FAX: 508-881-6849
sales@ashland.dynexhydraulics.com

European Sales

Unit C5 Steel Close, Little End Road,
Eaton Socon, St Neots,
Cambs. PE19 8TT United Kingdom
Tel: +44 (0) 1480 213980 FAX: +44 (0) 1480 405662
E-mail: sales@dynexhydraulics.co.uk