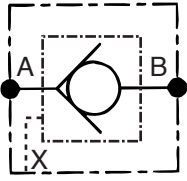


HNH

ISO
4401

CLAPETS ANTI-RETOUR PILOTES PILOTED CHECK VALVES ENTSPERRBARE RÜCKSCHLAGVENTILE

Taille 3
Size 3
NG 6



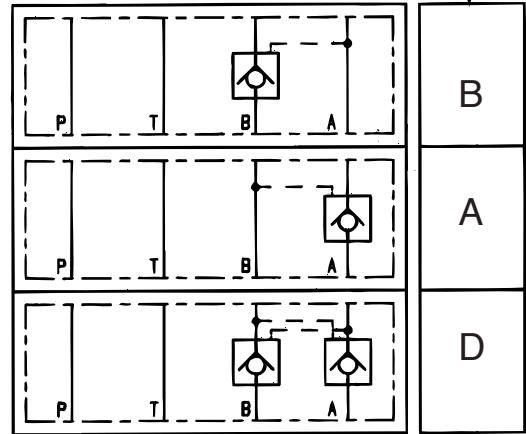
Montage Mounting Einbau	Rapport : <u>pression retenue</u> pression pilote Ratio : <u>restrain pressure</u> pilot pressure Verhältnis : <u>Haltedruck</u> Steuerdruck	P max Q max	Référence Reference Bestellnummer
-------------------------------	---	----------------	---

Sur embase On subplate Auf Grundplatte	3/1	Action directe Direct actuation Direkte Betätigung	240 bar 30 l/mn	HNH	3EE	a		
--	-----	--	--------------------	-----	-----	---	--	--

Système transfert On subplate Auf Grundplatte	3/1	Action directe Direct actuation Direkte Betätigung	240 bar 30 l/mn	HNH	3ET	a	*	
---	-----	--	--------------------	-----	-----	---	---	--

a	Matière joint Seal materials Dichtungswerkstoffe
H	Nitrile (standard)
V	Viton

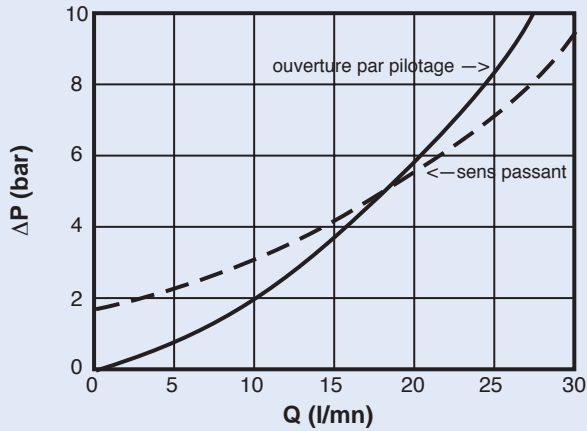
■ sur demande
on request
auf Anfrage



HNH 3EE...		HNH 3ET...	
Poids Weight Gewicht	1.0 kg	A - B	2.3 kg
		D	3.3 kg

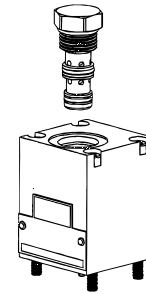
Caractéristiques Performance Kennlinien

Perte de charge
Viscosité 32 cst



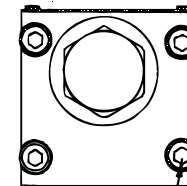
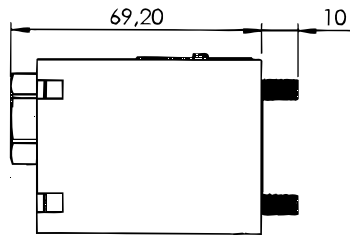
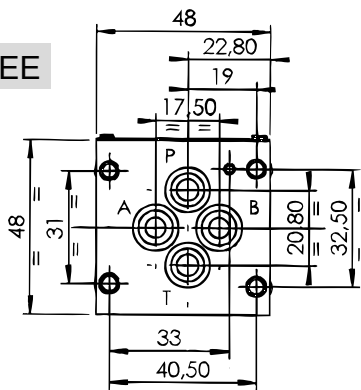
Pièces de rechange Spare parts Ersatzteile

	Code
Pochette de joints (10 cartouches) Seal kit (10 cartridges) Dichtungssatz (10 Ventile)	SK08-3X-TM
Joints plan de pose (20 joints) Interface seals (20 seals) Lochbild (20 Dichtungsringe)	1591200
Cartouche Cartridge Patrone	PC08-30-0-N

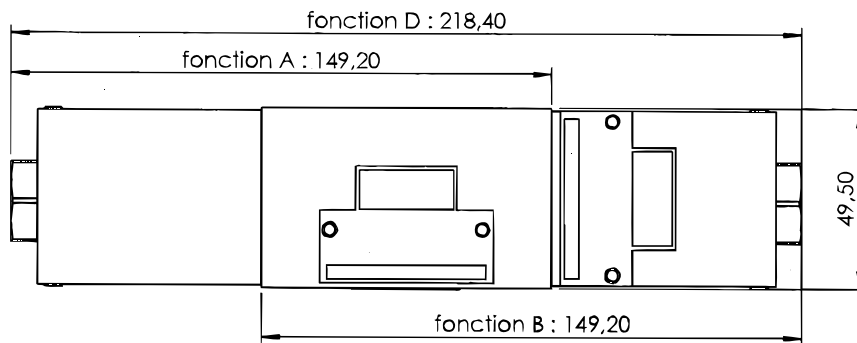


Encombrement Overall dimensions Abmessung

HNH 3EE



4 x CHc M5
Cs : 6 à 9 Nm



HNH 3ET

