

HNS

CLAPETS ANTIRETOUR SIMPLES

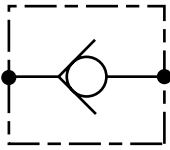
CHECK VALVES

RUCKSCHLAGVENTILE

Montage en ligne

In line mounting

Rohranschluss



| | | |
|--|--|---|
| Raccordement Connexion Anschluss | Pression d'ouverture Cracking pressure Öffnungsdruck | Référence Part number Bestellnummer |
|--|--|---|

| | | | | | | |
|---|---------|-----|----|---|---|----|
| Raccord taraudé Screw-in connection Einschraubgewinde | 0.4 bar | HNS | 3L | d | G | 04 |
| | 4.5 bar | HNS | 3L | d | G | 45 |

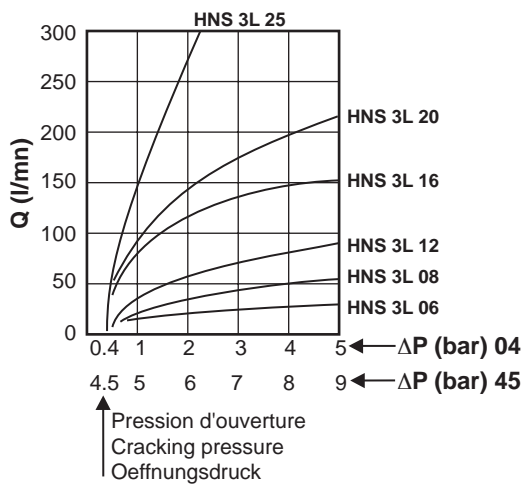
Ce clapet monobloc sans joint est compatible avec tout fluide hydraulique

This sealless monoblock check-valve is compatible with all regular hydraulic fluids

Dieses Monoblockventil ohne Dichtung passt zu jeder Hydraulikflüssigkeit

| d | Passage nominal Nominal diametre Nominal Durchmesser | Taraudage gaz Gas BPS Rohrgewinde | Poids Weight Gewicht |
|----|--|---|----------------------------|
| 06 | 6 mm | G1/4" | 0.200 kg |
| 08 | 8 mm | G3/8" | 0.230 kg |
| 12 | 12 mm | G1/2" | 0.420 kg |
| 16 | 16 mm | G3/4" | 0.850 kg |
| 20 | 20 mm | G1" | 1.500 kg |
| 25 | 25 mm | G1 1/4" | 2.350 kg |

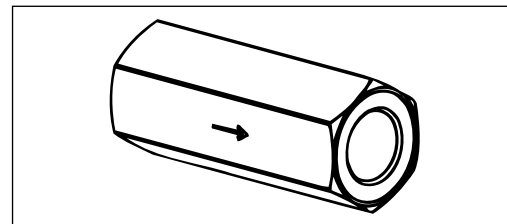
Perte de charge Viscosité 30 cst



Facteur de correction (C) de viscosité (μ)

$$\Delta P = \Delta P_{30} \times C$$

| | | | | | |
|---------|------|-----|-----|-----|------|
| μ (cst) | 25 | 45 | 85 | 150 | 195 |
| C | 0.95 | 1.1 | 1.3 | 1.5 | 1.55 |



| d | B | G | L | D | P |
|----|----|--------|-----|-----------|-----|
| 06 | 24 | 1/4" | 63 | 22 | 0.5 |
| 08 | 26 | 3/8" | 67 | Sansamage | |
| 12 | 32 | 1/2" | 83 | 30 | 0.5 |
| 16 | 41 | 3/4" | 100 | 37 | 0.5 |
| 20 | 50 | 1" | 125 | 46 | 0.5 |
| 25 | 60 | 1 1/4" | 143 | 57 | 0.5 |

