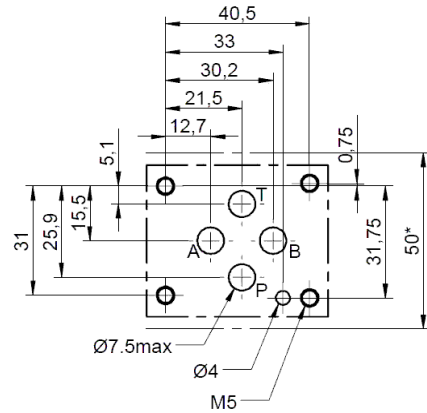


Plan de pose / Mounting interface

ISO 4401-03-02-0-05 (CETOP 03)



* : Intervalle minimum requis
Minimum spacing required

Codification / Identification code

HSP **3EM** **19**

Plage de pression
Adjustement range
19 : 50 – 180 bar

Matière joints
Seals material
H = Nitrile

Versions
(voir symboles hydrauliques page 2)
Versions
(see hydraulics symbols page 2)

AT = Simple sur A vers T
Single on A to T

BT = Simple sur B vers T
Single on B to T

PT = Simple sur P vers T
Single on P to T

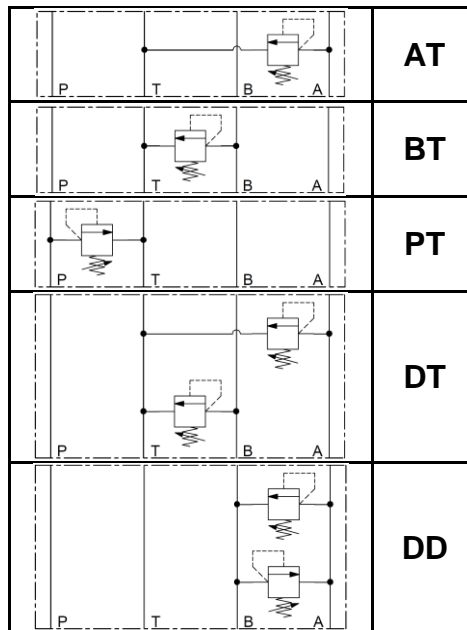
DT = Double sur A et B vers T
Double on A and B to T

DD = Double sur A et B avec décharges croisées
Double on A and B with crossed discharges

Réglage
Adjustement
Z = Vis
Screw

Symboles hydrauliques

Hydraulics symbols

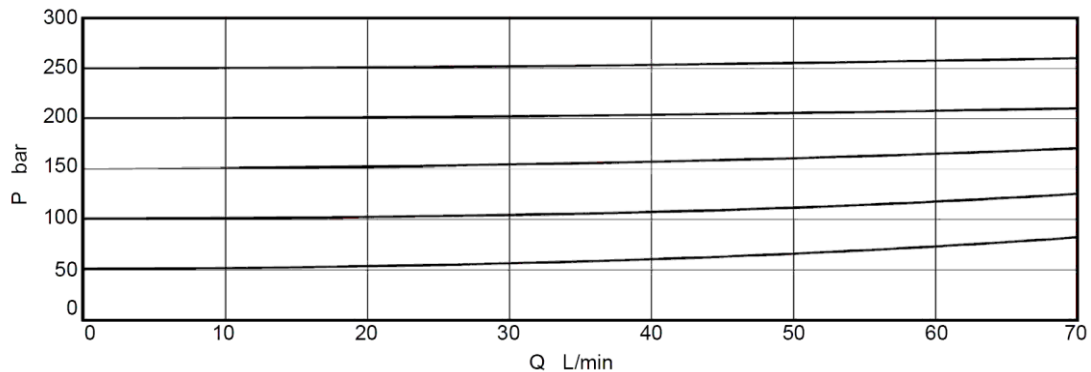


Caractéristiques

Features

Caractéristiques hydrauliques / Hydraulic features	
Débit maximum / Maximum flow	70 L/min
Pression maximum / Maximum pressure	210 bar
Fuite interne (80% du tarage) / Internal leakage (80% setting)	0,3 cc/min à 50°C; 21cSt; 200 bar
Plage de température du fluide / Fluid temperature range	H : -20° à +85°C
Plage de viscosité du fluide / Fluid viscosity range	7,4 à 420 cSt
Degré de contamination du fluide / Fluid contamination degree	Selon ISO 4406 :1999 Classe 20/18/15

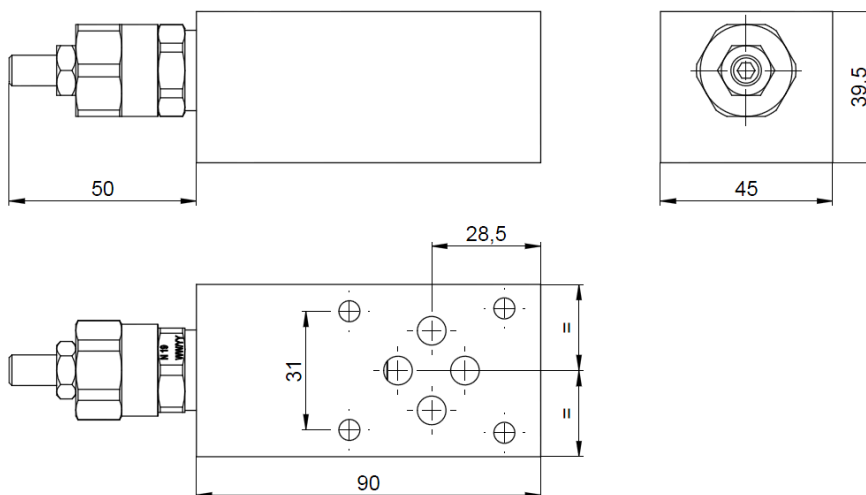
Courbes de régulation (cartouche seule) : 21cSt à 50°C
 Régulation curves (cartridge only) : 21cSt at 50°C



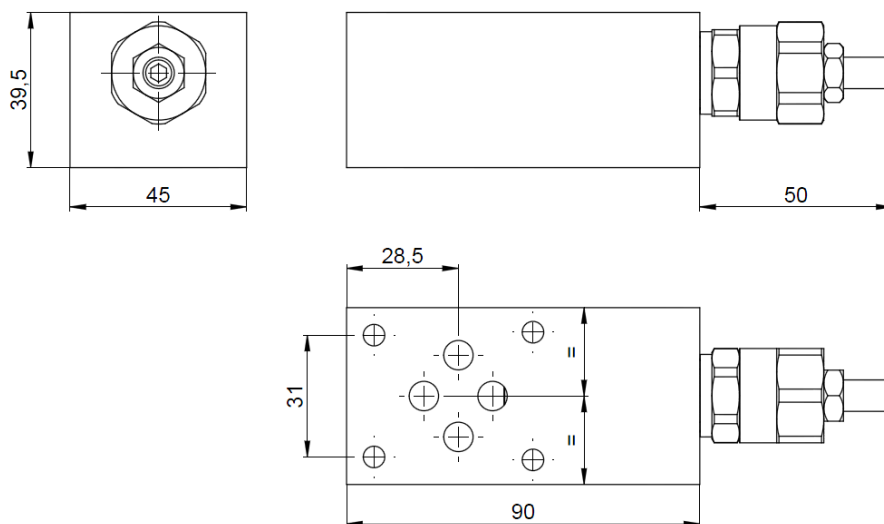
Encombrement

Overall dimensions

HSP 3EM19HATZ



HSP 3EM19HBTZ



LIMITEUR DE PRESSION MODULAIRE MONOBLOC

MODULAR MONOBLOCK RELIEF VALVE

Taille 3
Size 3
NG 06

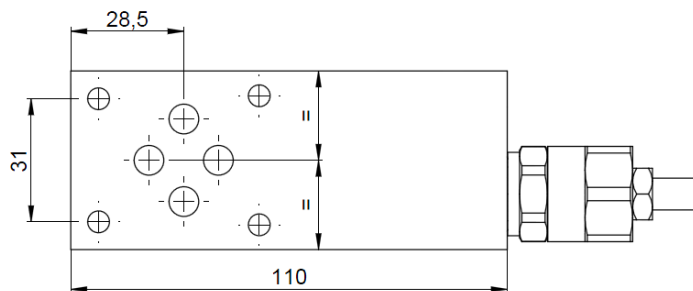
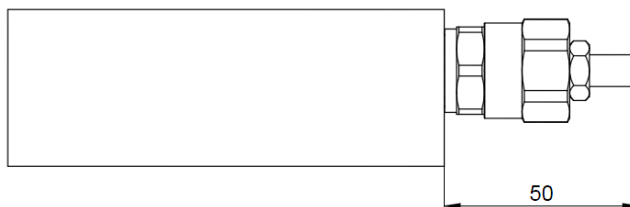
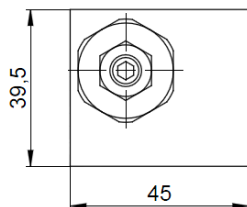
ISO
4401

**HSP
3EM19**

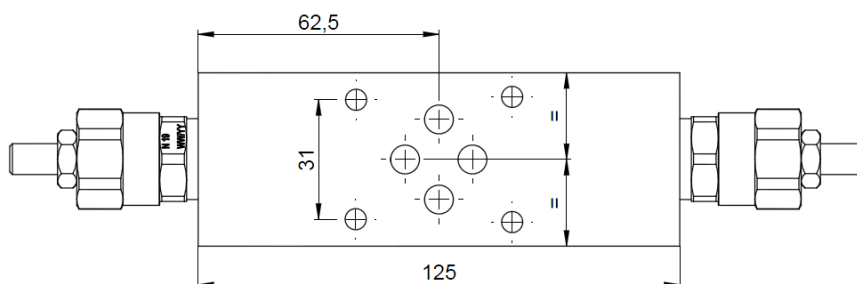
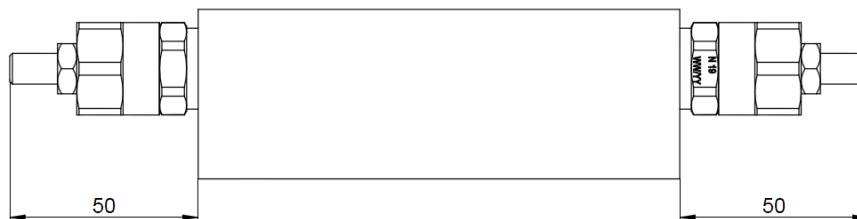
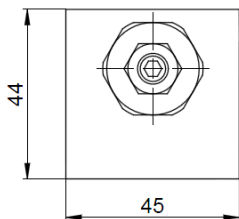
Encombrement

Overall dimensions

HSP 3EM19HPTZ



**HSP 3EM19HDTZ
HSP 3EM19HDDZ**



Pièces de rechange

Spare parts

Pochette 20 joints plan de pose
20 mounting face seals pocket

3440900

Valve
Valve

2001537