

Position du gicleur
Position of orifice
Blendelage

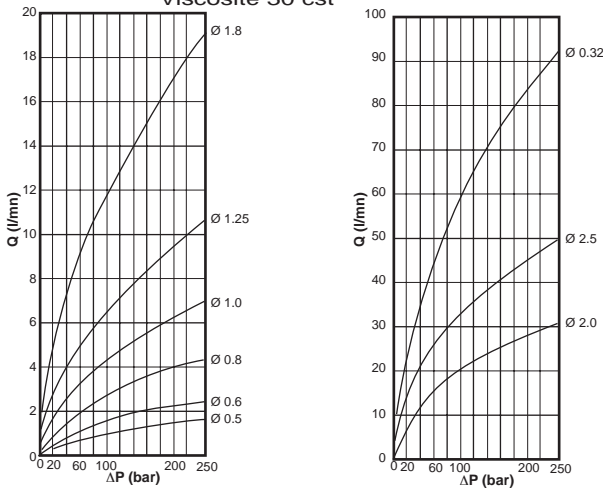
Référence (code 7 chiffres)
Part number (7 figure code)
Bestellnummer (7 Anzahlkode)

P	T	B	A
><			
	><		
		><	
			><
		><	><

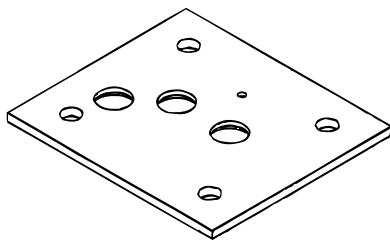
	0.5	0.6	0.8	1.0	1.25	1.6	2.0	2.5	3.2
P	1938400	1938500	1938600	1938700	1938800	1938900	1939000	1919800	1919700
T	1941800	1941900	1942000	1942100	1942200	1942300	1942400	1942500	1942600
B	1940000	1940100	1940200	1940300	1940400	1940500	1940600	1940700	1940800
A	1939100	1939200	1939300	1939400	1939500	1939600	1939700	1939800	1939900
AB	1940900	1941000	1941100	1941200	1941300	1941400	1941500	1941600	1941700

Caractéristiques Performance Besonderheiten

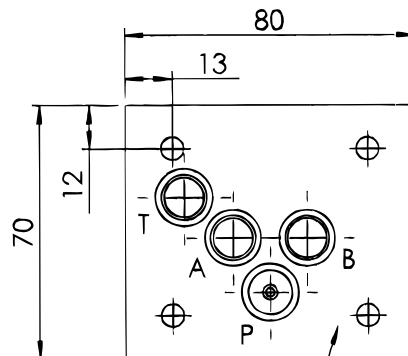
Perte de charge $\Delta P=f(Q)$
Viscosité 30 cst



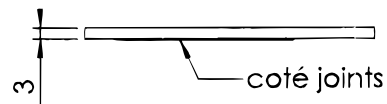
Vue 3D 3D view 3D Ansicht



Encombrement Overall dimensions Abmessung



plan de pose ISO
4401-05-04-0-94



Exemple : plaque \varnothing 2.5/P
Code : 1919800