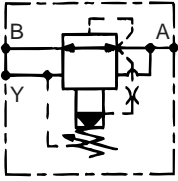


HRP

ISO
4401

REDUCTEURS DE PRESSION MONOBLOC MONOBLOCK PRESSURE REDUCING VALVES DRUCKREGELVENTILE MONOBLOCK

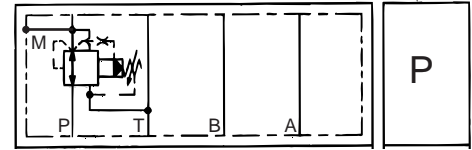
Taille 5
Size 5
NG 10



Montage Mounting Einbau	Plage de pression Regulated range Druckbereich	P max Q max =56 l/mn	Référence Part number Bestellnummer
-------------------------------	--	----------------------------	---

Monobloc modulaire Modular monoblock Modular Monoblock (H = 50 mm)	7 - 27 bar	210 bar	HRP	3JM	02	a	P	b
	10 - 103 bar		HRP	3JM	10	a	P	b
	27 - 207 bar		HRP	3JM	20	a	P	b
	207 - 315 bar	315 bar	HRP	3JM	31	a	P	b

a	Matière joint Seal materials Dichtungswerkstoffe
H	Nitrile (standard)
V	Viton



b	Réglage Adjustment Einstellung
Z	Vis Screw Schraube
W	Bouton Hand knob Drehknopf
T	Vis avec plombage Tamperproof screw Verplombte Schraube

<p>◇ Pour les débits supérieurs à 56 l/mn utiliser le système transfert :</p> <p>◇ For flow rates exceeding 56 l/mn, use the transfer system :</p> <p>◇ Für Durchflusswerte über 56 l/mn, Transfersystem verwenden :</p>	<p>HRP 4JE**HSZ + bloc transfert 1552200</p>
--	---

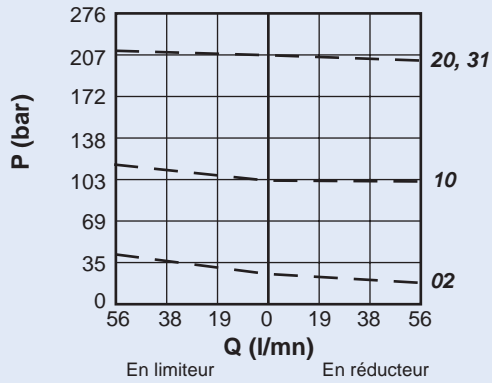
HRP 3JM...PZ

Poids Weight Gewicht	3.0 kg
----------------------------	--------

	02	10	20	31
Fuite de pilotage maximum Maximum pilot leakage Maximaler Steuerölverbrauch	0.2 l/mn	0.2 l/mn	0.2 l/mn	0.2 l/mn

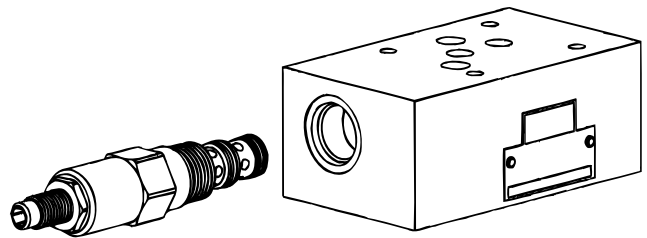
Caractéristiques Performance Kennlinien

Courbes débit-pression
Viscosité 32 cst



Pièces de rechange Spare parts Ersatzteile

		Code
Pochette de joints (10 cartouches) Seal kit (10 cartridges) Dichtungssatz (10 Patronen)	02-10-20 31	SK10-3N-BM SK10-3P-BM
Joint de pose (20 o-rings) Interface seal kit (20 o-rings) Lochbild (20 o-rings)		1843200
Cartouches Cartridges Patronen	02 10 20 31	PR10-36A-0-N-04 PR10-36A-0-N-15 PR10-36A-0-N-30 PR50-36A-0-P-50



Encombrement Overall dimensions Abmessung

HRP 3JM...

