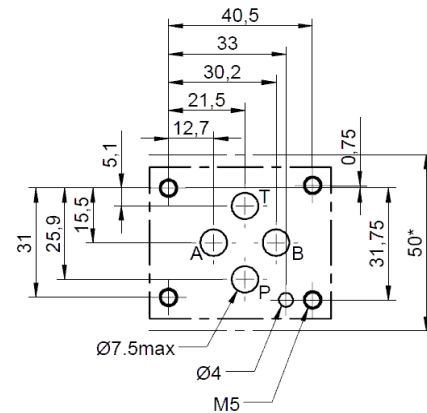


Plan de pose / Mounting interface

ISO 4401-03-02-0-05 (CETOP 03)



* : Intervalle minimum requis
Minimum spacing required

Codification / Identification code

HSP **3EM** **H** **Z**

Plage de pression
Adjustment range

- 05 : 5 – 55 bar (corps alu)
- 21 : 50 – 215 bar (corps alu)
- 32 : 100 – 350 bar (corps acier)

Matière joints
Seals material
H = Nitrile

Versions
(voir symboles hydrauliques page 2)

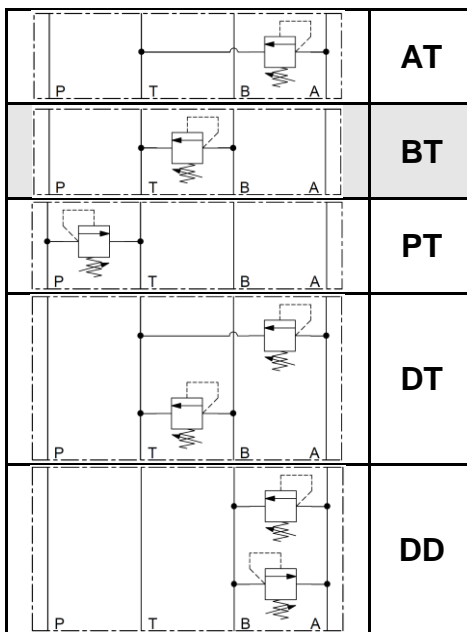
- Versions
(see hydraulics symbols page 2)
- AT = Simple sur A vers T
Single on A to T
- BT = Simple sur B vers T (sur demande)
Single on B to T (on request)
- PT = Simple sur P vers T
Single on P to T
- DT = Double sur A et B vers T
Double on A and B to T
- DD = Double sur A et B avec décharges croisées
Double on A and B with crossed discharges

Réglage
Adjustement
Z = Vis
Screw

- Options sur demande :
- volant plastique
 - tamperproof
 - tarage

Symboles hydrauliques

Hydraulics symbols



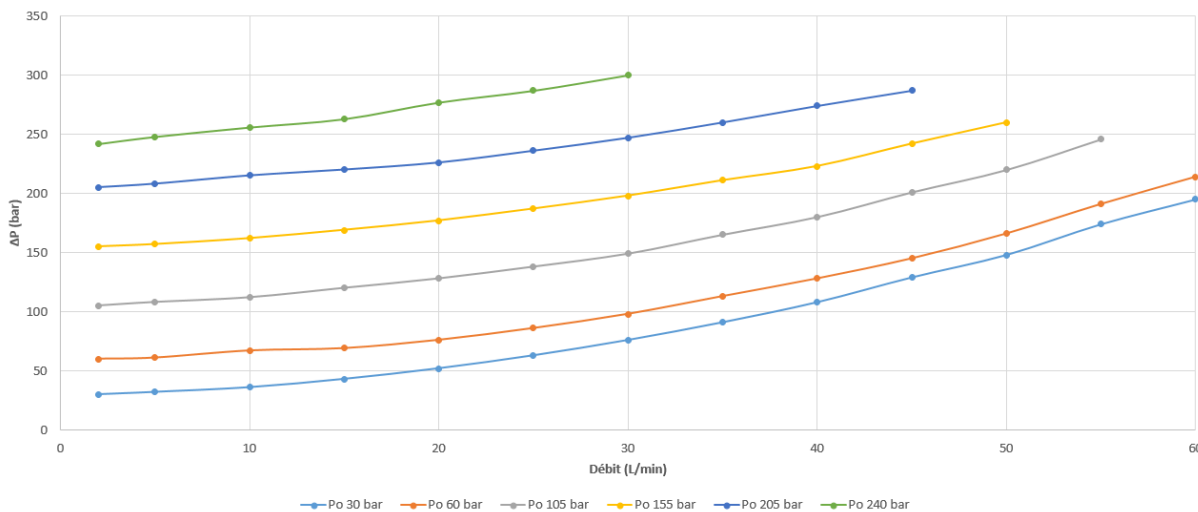
sur demande
on request

Caractéristiques

Features

Caractéristiques hydrauliques / Hydraulic features	
Débit maximum conseillé / Maximum recommended flow rate	45 L/min
Pression maximum / Maximum pressure	220 bar (corps alu) / 350 bar (corps acier)
Fuite interne (80% du tarage) / Internal leakage (80% setting)	0,3 cc/min à 50°C; 21cSt; 200 bar
Plage de température du fluide / Fluid temperature range	H : -20° à +85°C
Plage de viscosité du fluide / Fluid viscosity range	7,4 à 420 cSt
Degré de contamination du fluide / Fluid contamination degree	Selon ISO 4406 :1999 Classe 20/18/15

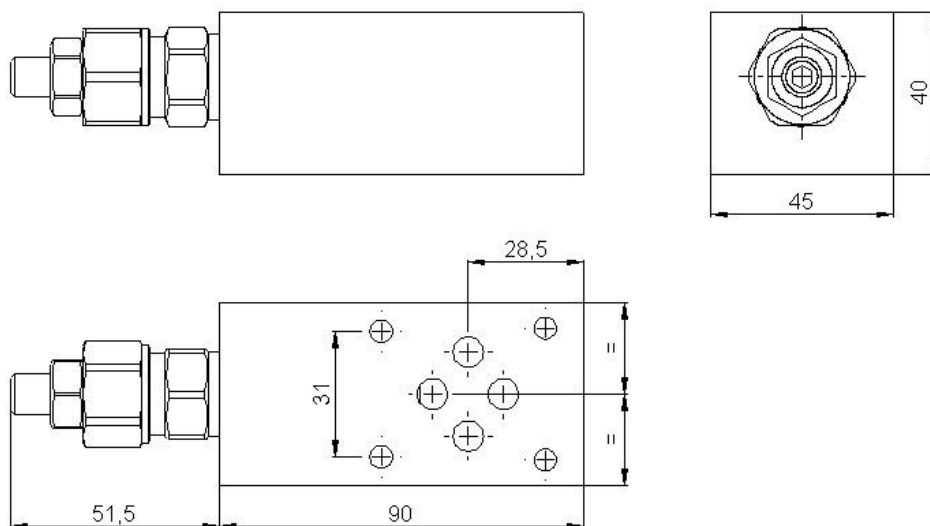
Courbes de régulation: 46 cSt à 50°C
Regulation curves : 46 cSt at 50°C



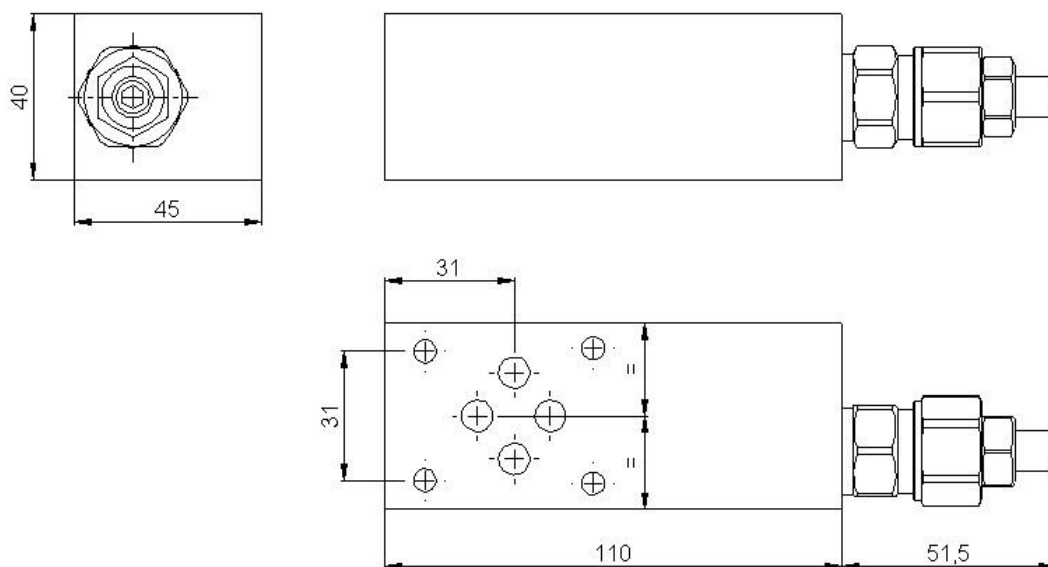
Encombrement

Overall dimensions

HSP 3EMxxHATZ



HSP 3EMxxHPTZ



LIMITEUR DE PRESSION MODULAIRE MONOBLOC

MODULAR MONOBLOCK RELIEF VALVE

Taille 3
Size 3
NG 06

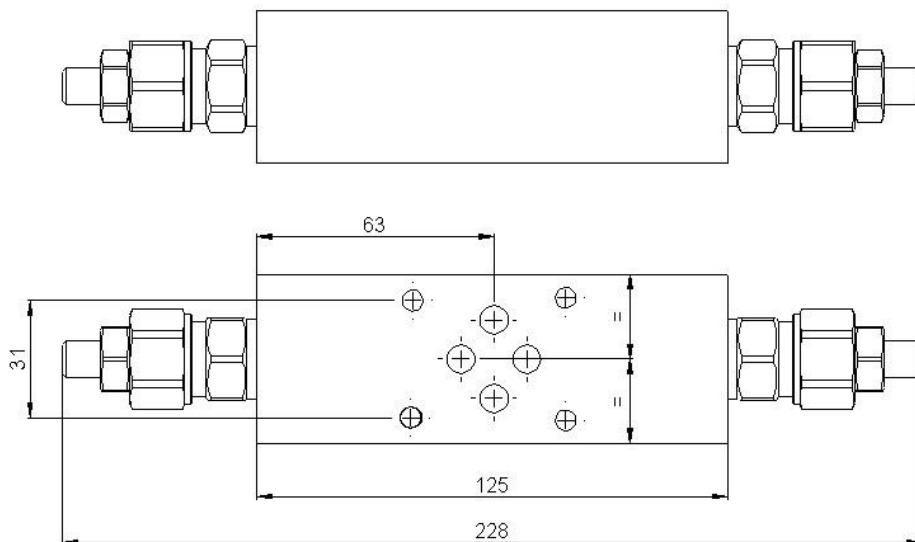
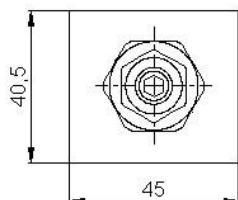
ISO
4401

**HSP
3EM**

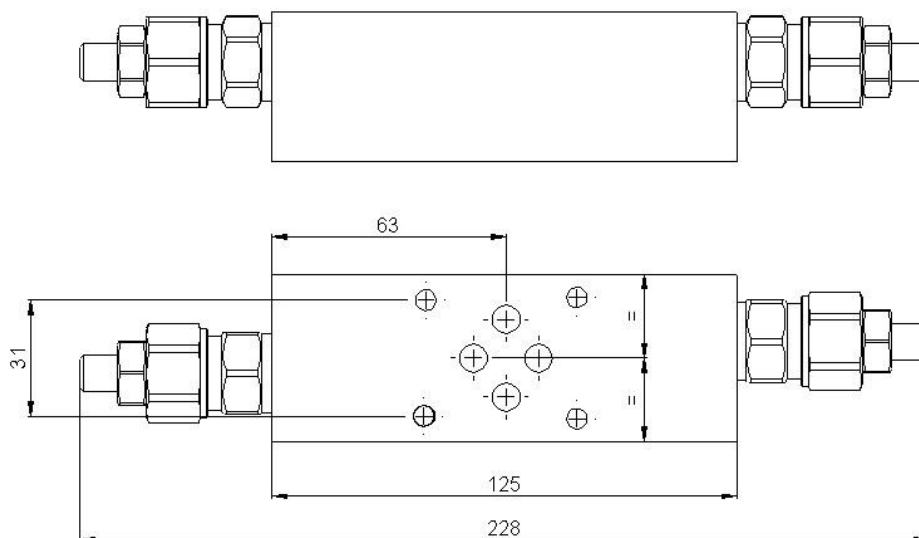
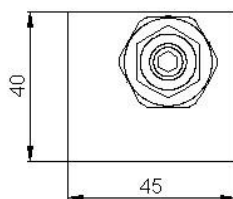
Encombrement

Overall dimensions

HSP 3EMxxHDTZ



HSP 3EMxxHDDZ



Pièces de rechange

Spare parts

Pochette 20 joints plan de pose 20 mounting face seals pocket	Pochette 10 joints cuivre 10 copper seals pocket
3440900	3740500